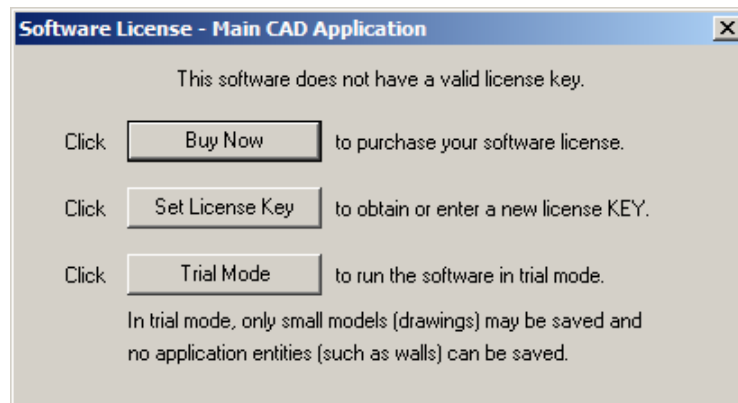
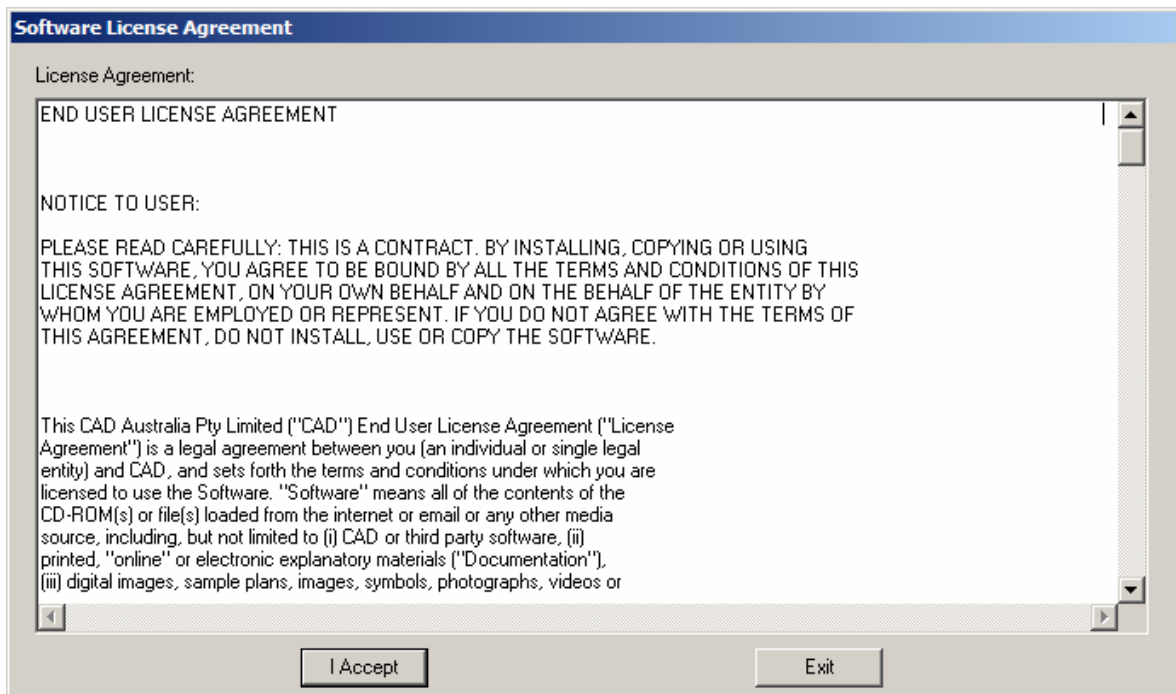


RealCAD and LANDWorks Licensing Procedures

When the software is started for the first time, the following dialog box will be displayed:



Click on the "Set License Key" button and the following dialog box will be displayed:



Click on the "I Accept" button to accept the License Agreement and the following dialog box will be displayed:

Software License - Main CAD Application

To obtain a license KEY number you must first purchase a software license

Have you purchased? Yes
 No Buy Now

Normal stand-alone machine license Network
Connect to a licensed network server

This machine is connected to the internet and I have my serial number

Email Address
Software Serial Number Get License

This machine is not connected to the internet

Offline Key Activation

Step 1. Copy the LOCK # to send to your dealer Print

Software LOCK # Copy

Step 2. Contact your dealer to obtain your activation key.

Step 3. Type or paste your activation KEY below... (A to F, digits 0 to 9 and - only)

Paste Validate

Exit to Trial mode

Select “Yes” for the “Have you purchased?” option, as shown below. This will activate the rest of the dialog box.

Software License - Main CAD Application

To obtain a license KEY number you must first purchase a software license

Have you purchased? Yes
 No Buy Now

Normal stand-alone machine license Network
Connect to a licensed network server

This machine is connected to the internet and I have my serial number

Email Address
Software Serial Number Get License

This machine is not connected to the internet

Offline Key Activation

Step 1. Copy the LOCK # to send to your dealer Print

Software LOCK # Copy

Step 2. Contact your dealer to obtain your activation key.

Step 3. Type or paste your activation KEY below... (A to F, digits 0 to 9 and - only)

Paste Validate

Exit to Trial mode

Note: If you have not actually purchased your software yet, you must do so before trying to license it.

Ensure the “**Normal stand-alone machine license**” option is selected, as shown above. It should be selected automatically.

*You should only select the “**Connect to a licensed network server**” option if you are installing a networked license of the software in a classroom or lab.*

If you have been issued a Serial Number and you want to license your software yourself, do the following:

1. Ensure the option “**This machine is connected to the internet and I have my serial number**” is selected.
2. Enter your email address in the appropriate box, as shown below (example email displayed)
Note: You MUST use the same email address that you provided when you purchased the software.
3. Enter your serial number in the appropriate box. (example serial number displayed)

Software License - Main CAD Application

To obtain a license KEY number you must first purchase a software license

Have you purchased? Yes No Buy Now

Normal stand-alone machine license Network

Connect to a licensed network server

This machine is connected to the internet and I have my serial number

Email Address

Software Serial Number Get License

This machine is not connected to the internet

Offline Key Activation

Step 1. Copy the LOCK # to send to your dealer Print

Software LOCK # Copy

Step 2. Contact your dealer to obtain your activation key.

Step 3. Type or paste your activation KEY below... (A to F, digits 0 to 9 and - only)

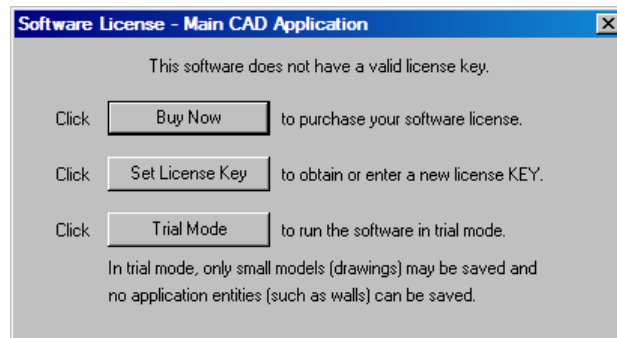
Paste Validate

Exit to Trial mode

4. Click the “**Get License**” button.
5. After a short delay the following dialog box should appear indicating that your software is now licensed and ready to use.



If the dialog box above does not appear and the “**Software License – Main CAD Application**” dialog box reappears, as shown below, it means the license database has rejected your email address and/or your serial number.



Note: Computer firewalls can prevent your software from licensing itself automatically across the Internet. If you think this is happening to you please see your IT/Network Manager.

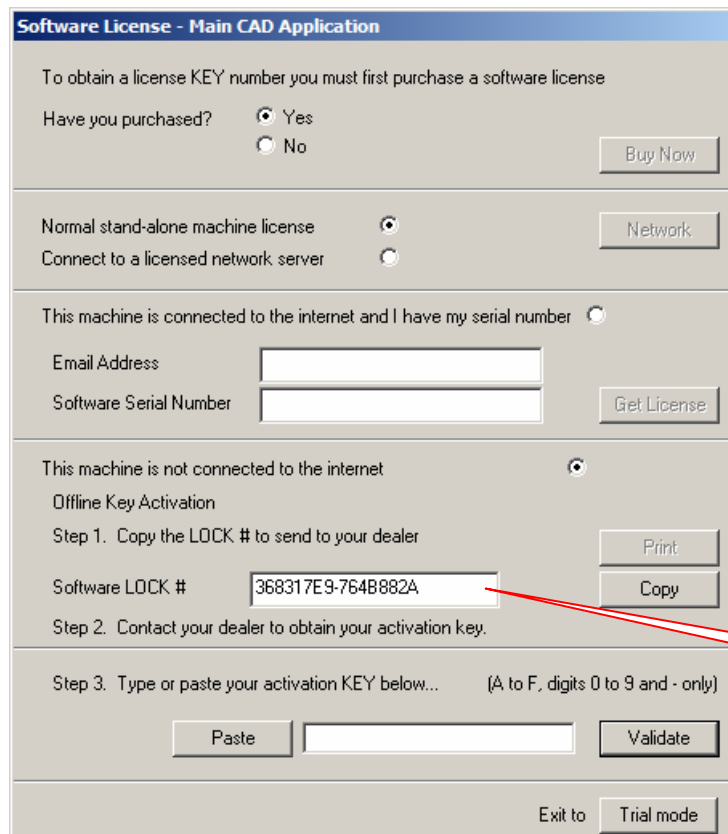
You can try setting the license key again, double-checking your email address and serial number when you enter them, or follow the next steps.

If you:

- are not connected to the Internet, or
- have not been issued a Serial Number, or
- are unable to license your software automatically, or
- simply want to license your software with the help of human being ☺,

please do the following:

1. Select the option “**This machine is not connected to the Internet**”, as shown below.



2. Advise your dealer or CAD International of the Software LOCK # (number) that is shown (example lock # displayed). You can do this by email, fax or phone.
3. When you receive your license activation key, enter it into the appropriate box (between the “Paste” and “Validate” buttons).

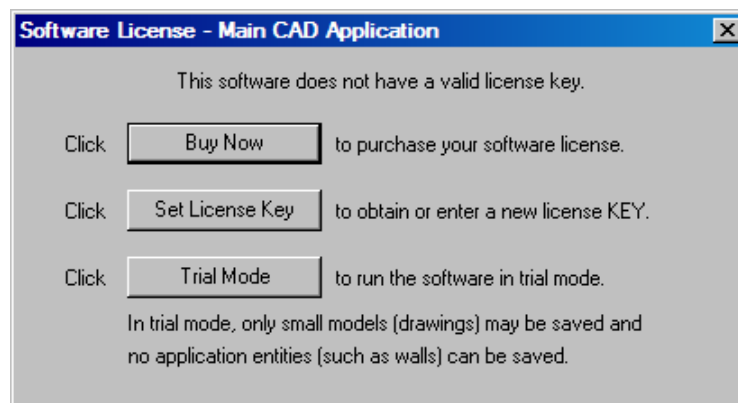
Note: The license activation key is 17 characters long – 8 characters, a dash and another 8 characters. The characters comprise only the numbers 0-9 and the letters A-F. The letters are not case sensitive.

Note: While you are waiting for your license activation key you can click the “Trial Mode” button to run the software so you can practice before going “live”! ☺

4. Click the “**Validate**” button to license your software.
5. The following dialog box will be displayed indicating that your software is now licensed and ready to use.



If the dialog box above does not appear and the “**Software License – Main CAD Application**” dialog box reappears, as shown below, it means the license database has rejected your license activation key.



You should try setting the license key again, double-checking your license activation key when you enter it.

If it still does not work, please contact your dealer or CAD International.